

the waterline

December 2011
www.pwsd.org

Parker Water And Sanitation District
19801 E. Mainstreet, Parker, CO 80138
303.841.4627

The Milk in Your Cereal Took 140 Gallons of Water to Produce

You think that you are smart about conserving water. You landscape your home with native plants. You turn off the faucet when you are brushing your teeth. You're doing a good job. And yet, you might actually be using hundreds of gallons more water than you think that you are using. That's because there are products that we use every day that take many, many gallons to produce and most of us don't even realize it.

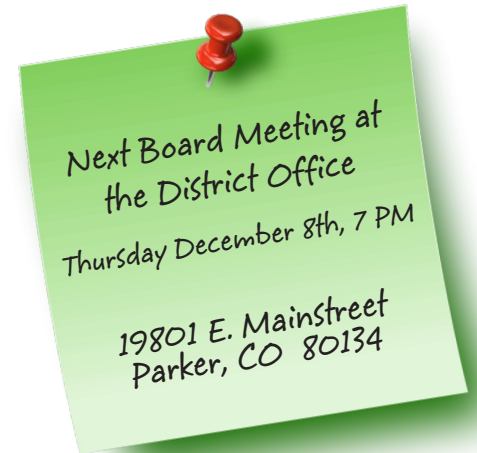


A study by researchers at Carnegie Mellon University reveals that we are using up vast amounts of our scarce supply of water to create the products that we use every single day. Some of this water use is obvious. For example, water has to be used to grow crops. However, a

majority of the water use is indirect water use, which is actually a lot less obvious. It has to do with the water used in the processing, packaging and shipping of products.

Water is used up at every step along the way before a product gets to your home. The amount of water used just might surprise you. For example, did you know that just \$1 worth of the milk that is in your refrigerator required approximately 140 gallons of water to produce? It takes almost twice that amount of water to produce \$1 worth of sugar. And you aren't the only culprit in the home; your pet's food requires approximately 200 gallons of water for every \$1 of the product.

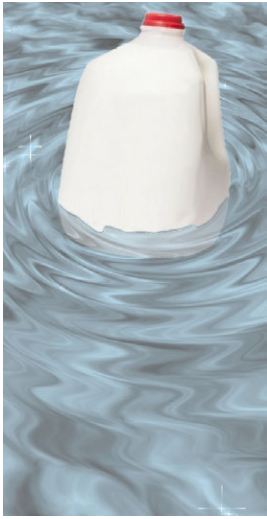
Continued top of Page 2



Water Saver Tip of the Month



Don't let the water run while you are shaving or brushing your teeth. Instead, fill the sink with enough water to rinse your razor or toothbrush, and save 2.5 to 4 gallons a minute. That's up to 200 gallons a week for a family of four!

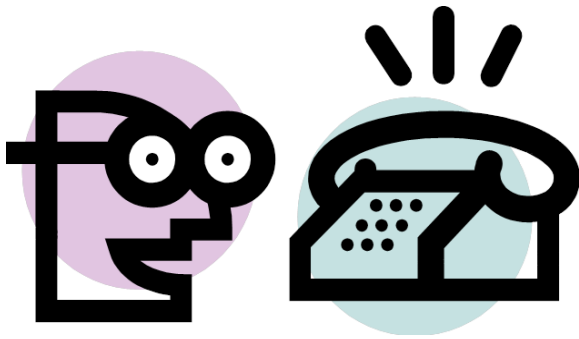


The Milk in Your Cereal continued

The research study isn't designed just to make us feel bad about our unconscious water use. Instead, the goal of the study is to review the ways in which water is being wasted at all levels of food production. The hope is that conscious awareness of this problem could result in long-term changes to the packaging, processing and

shipping practices where a bulk of the water waste is occurring.

Will the big businesses care about this problem? Chances are that they actually will. For one thing, saving water is going to save them money. More importantly than that, however, is the fact that they were previously unaware of ways to solve this problem. Since most of the water waste is coming from indirect use rather than direct use, they didn't realize that there were so many areas for change other than just improving their watering habits. Becoming aware of that is the first step towards embracing that change.



New Phone Alert System in 2012

To enhance our level of customer service, PWS&S will begin the use of a new phone alert system in 2012 that will automatically keep you up to date in the event of an emergency. For this reason, it is important that we have a current phone number for all of our customers. Please enter your number on your bill stub, or contact our office by phone or email to update your information as needed. Thank you!

Gerilyn's Holiday Hot Chocolate

- 2 cups milk
- 2 cups half & half
- 8 ounces bittersweet chocolate
- 8 ounces milk chocolate
- 1 tablespoon sugar
- 1 teaspoon vanilla
- 1 teaspoon espresso powder (or instant coffee)

Combine milk and half & half in a saucepan, heat to just under a simmer. Add the bittersweet and milk chocolate, stir until melted. Add sugar, vanilla and espresso powder, whisk until smooth.

Garnish with marshmallows, whipped cream and/or a sprinkle of cinnamon if desired

Recipe from Gerilyn Miller, Culinary Head Chef, King Soopers store # 71



Holiday Wishes

Best wishes this Holiday Season from all of us at Parker Water & Sanitation District!

"Plant This, Not That"

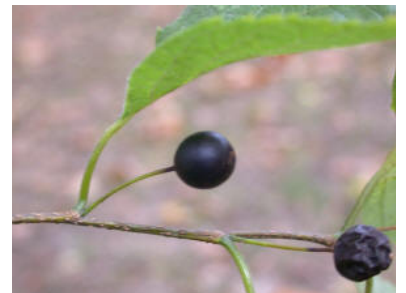
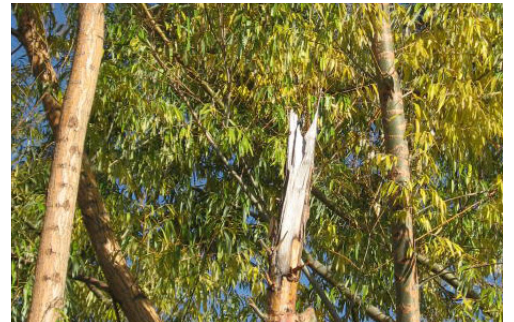
Many homeowners are looking for a fast growing tree to provide them with shade as quickly as possible. Unfortunately, here in Colorado, with our dramatically changeable climate, this is not the best way to go. Fast growing trees, like Cottonwoods and Poplars (*Populus* spp.), Willows (*Salix* spp.) and Silver Maples (*Acer saccharinum*) tend to have very weak wood and are prone to severe breakage when those early fall or late spring snows come along (which seems to be every year!). On top of that, they have very aggressive root systems, and can cause a lot of damage to sprinkler systems, water lines, sidewalks and driveways. They are really inappropriate for the smaller lots found in our suburban and urban yards.

The solution? The much more durable Hackberry (*Celtis occidentalis*). This tree is in the same family as and similar in habit to the American Elm. It is a medium to large sized deciduous tree that typically grows 40 to 60 feet tall with upright arching branches and a rounded spreading crown. Mature gray bark develops corky ridges and an interesting warty texture. Insignificant greenish flowers appear in spring and give way to an often abundant fruit crop of small edible purple berries, much favored by birds. The leaves are distinctly asymmetrical and coarsely textured and have a yellow fall color.

This xeric and deer-resistant tree is highly adaptable to many adverse conditions, including wet soils, dry soils, poor soils, compacted soils, rocky soils, soils of various pH, heat, drought, flooding, pollution, and windswept areas. The rate of growth is not comparable to the fast growing species mentioned earlier, but is more than adequate when you consider how well behaved this tree is.



Plant a fast growing tree like Cottonwood (above) or Willow (below), and you will see this damage frequently here in Colorado





Principles of Xeriscape Classes Start in January!

Join Craig Miller, PWSD's Water Efficiency Specialist,
for these **free** classes at Tagawa Garden Center, 7711 S. Parker Rd.
Six consecutive Saturdays in January and February, from noon to 1 PM.

1/7 - The Basics of Xeriscape

Xeriscape is not rocks and cactus, but a colorful, lower maintenance alternative to the water hungry landscapes we are most used to. Learn the 7 principles of Xeriscaping in this introductory class, and take away some great ideas for retrofitting your existing landscape, or installing a new one!

1/14 - Principles of Xeriscape 1 - Design

Xeriscaping offers a way to have beautiful, livable landscapes without excess water use, and all good Xeriscapes begin with a good design. Learn the basics of Xeric yard and garden design in this instructive class.

1/21 - Principles of Xeriscape 2 - Soil Preparation

Next to design, soil preparation is the most important part of successful Xeriscaping and gardening. We will dish out the "dirt" on amending soil for a water efficient and healthy landscape.

1/28 - Principles of Xeriscape 3 & 4 - Appropriate Use of Turf & Plant Selection

The most controversial and misunderstood of the 7

Xeriscape principles is the concept of appropriate turf. Turf grasses have a place in the landscape, even in a Xeriscape. We will provide you with guidance on this aspect of landscaping, as well as cover plant selection and proper grouping of plant materials in this informative class.

2/4 - Principles of Xeriscape 5 & 6 - Irrigation & Mulch

Irrigation is necessary in a Xeric landscape, at least during the first few years while the plants' root systems are developing. And critical to making efficient use of that water is the appropriate use of mulch. Find out what you need to know about these two Xeric principles in this class.

2/11 - Principles of Xeriscape 7 - Maintenance

Maintaining the landscape cannot be forgotten, even in a Xeriscape. Pruning, occasional weeding and pest management, checking that the irrigation system is functioning properly, and adjusting automatic irrigation systems as the seasons change will be needed. Come learn what you need to know to maintain your Xeriscape properly!



Pink Chintz Thyme



Woolly Thyme

Xeric Plant of the Month

There are quite a few ground covers that can be walked on, but creeping thyme (*Thymus* spp.) is one of the best. It makes an ideal ground cover to use between stepping stones, in the foreground of bed areas, or as a lawn substitute. Creeping thyme grows about 2 to 4 inches high and can spread up to two or more feet. The leaves are very small but dense, forming a thick carpet of aromatic foliage. Many different cultivars are available, such as Lemon Thyme, Elfin Thyme and Woolly Thyme. Leaf color varies from light to dark green and even a silvery gray-green. They flower so prolifically in the late spring and early summer, you can hardly see the evergreen leaves below! Creeping thyme is simple to maintain, as it can easily be confined to a specific area. It requires a well-drained soil, and does best in full sun. Isn't it about "thyme" to replace some of those water-hungry plants in your yard (like your lawn?) with a steppable groundcover?



Pink Creeping Thyme Lawn



Elfin Thyme